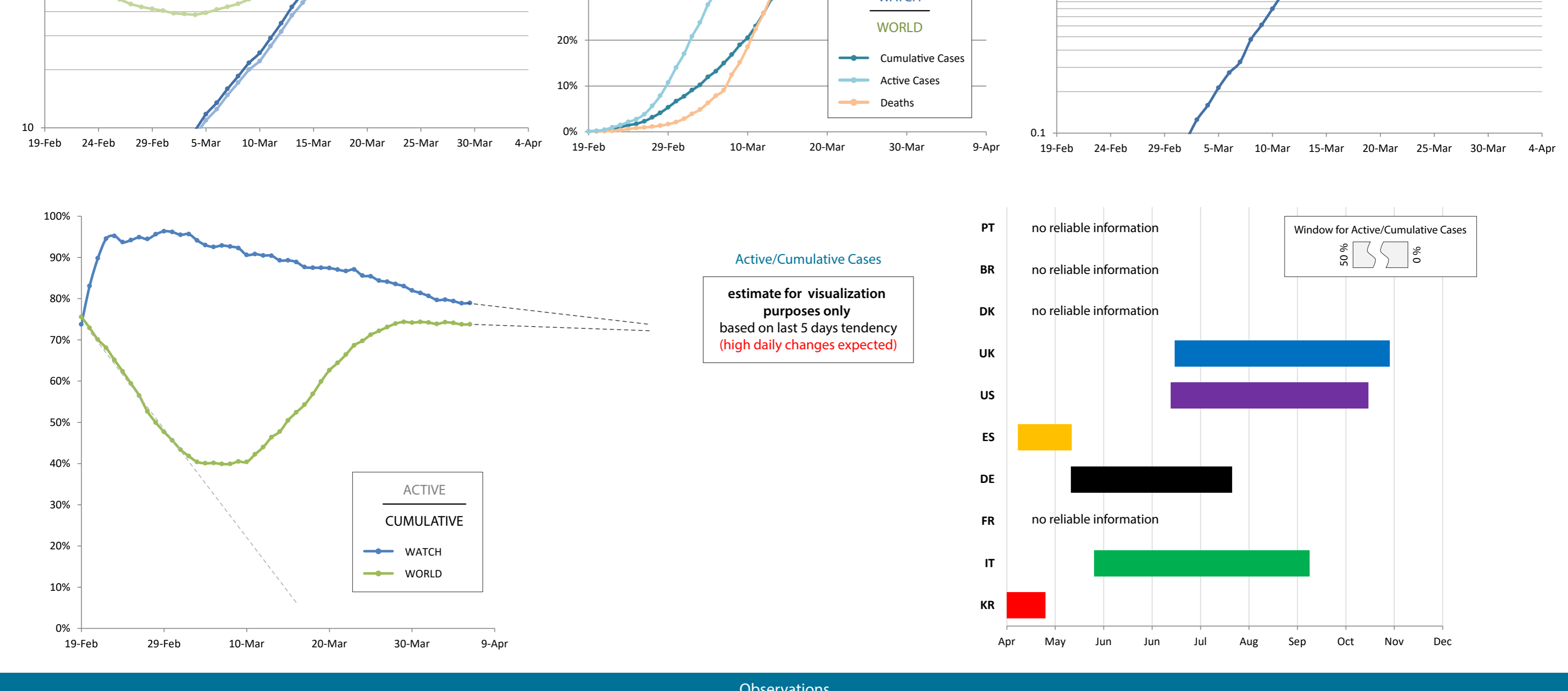
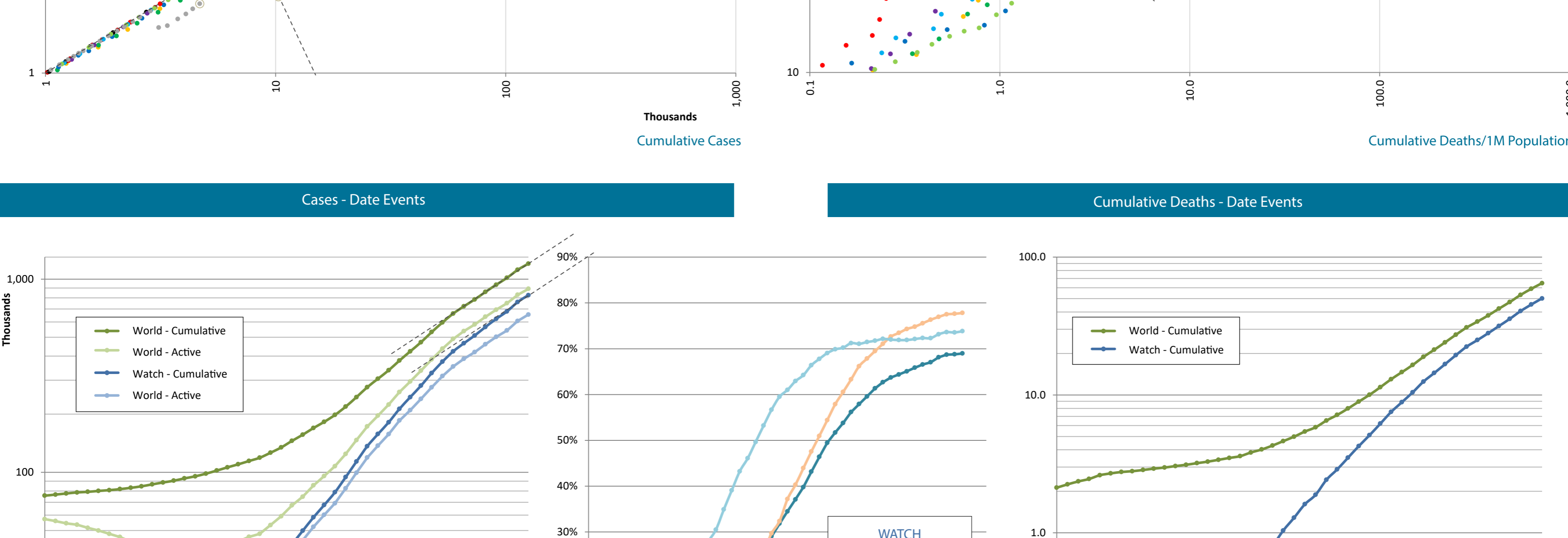
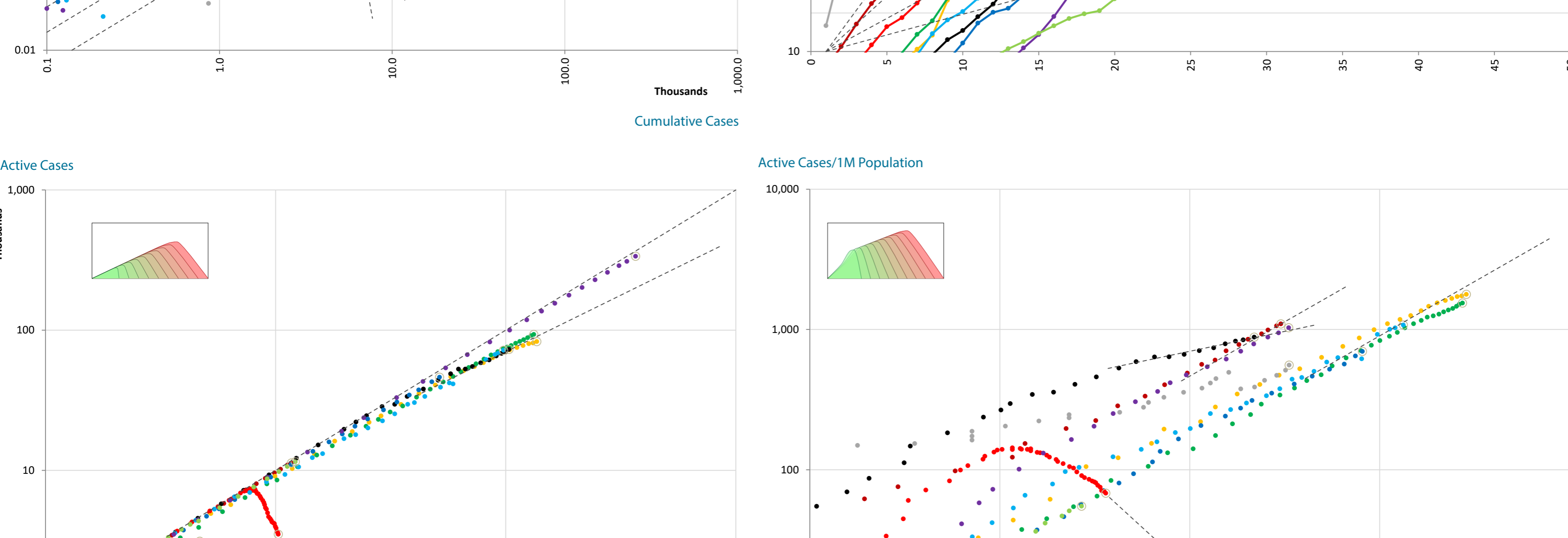
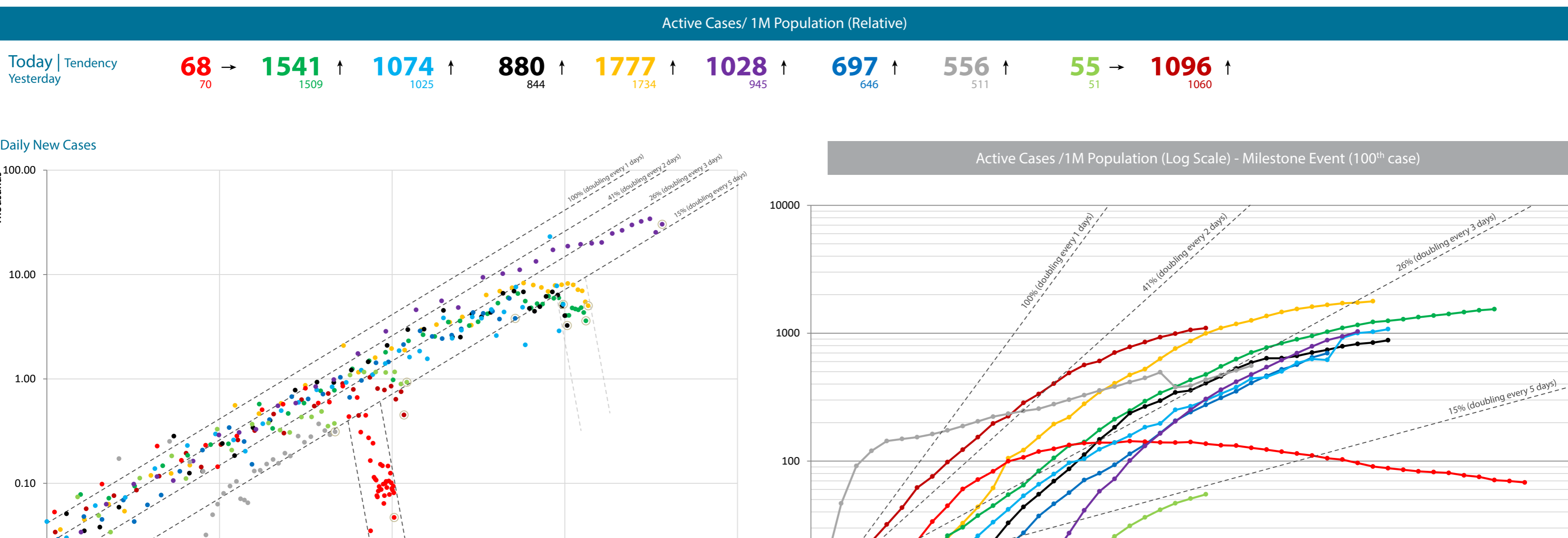
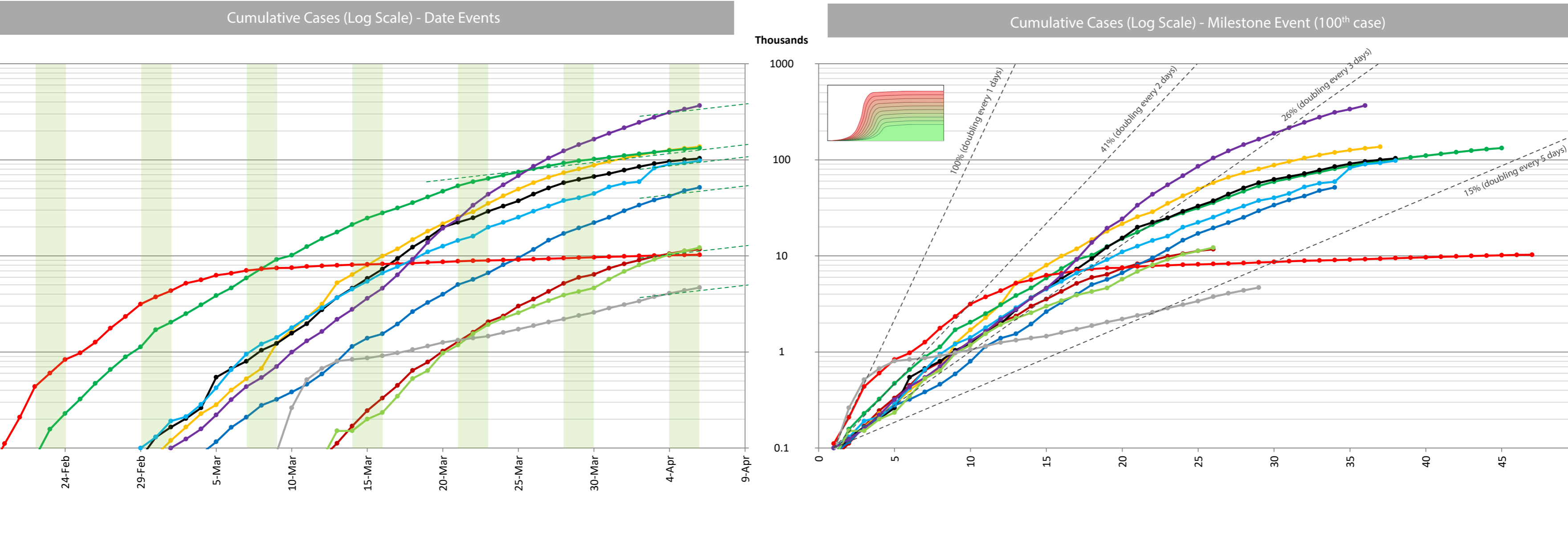
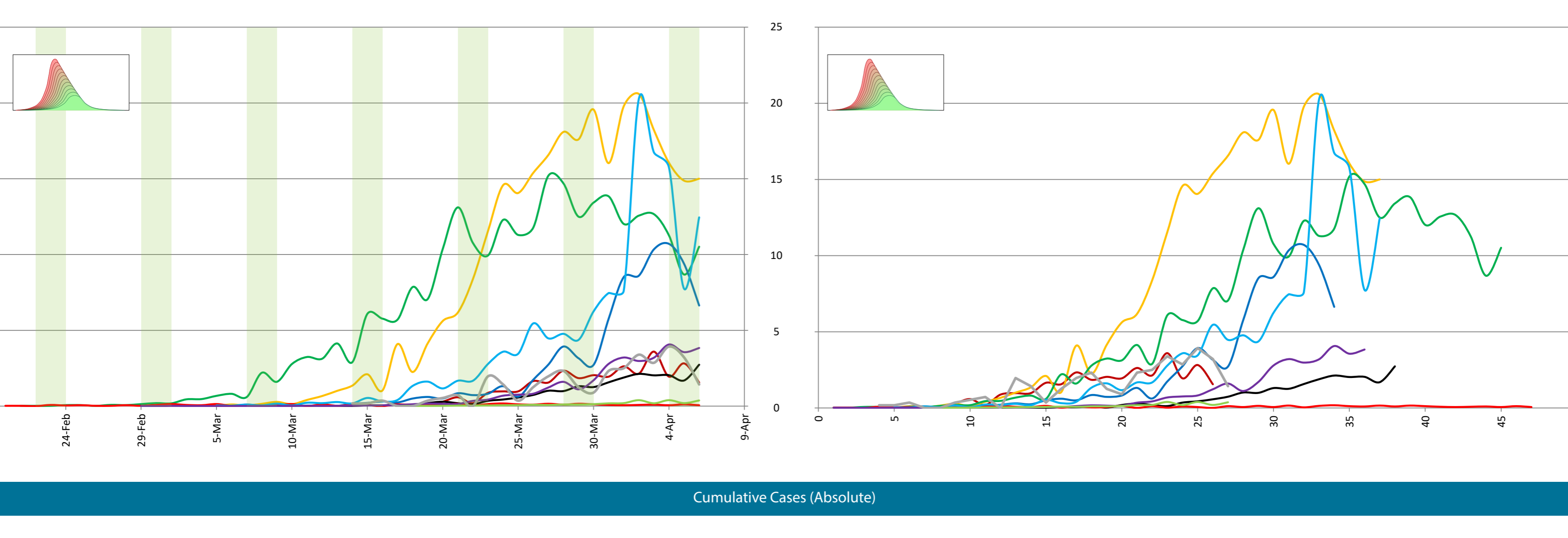
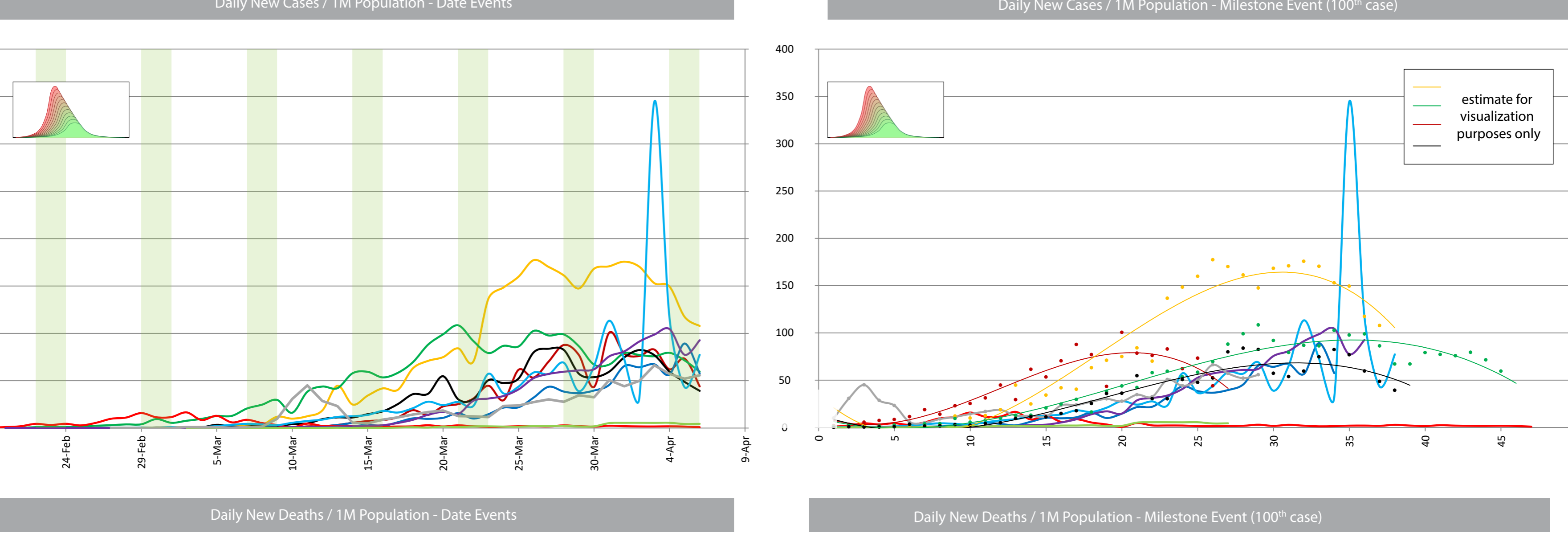
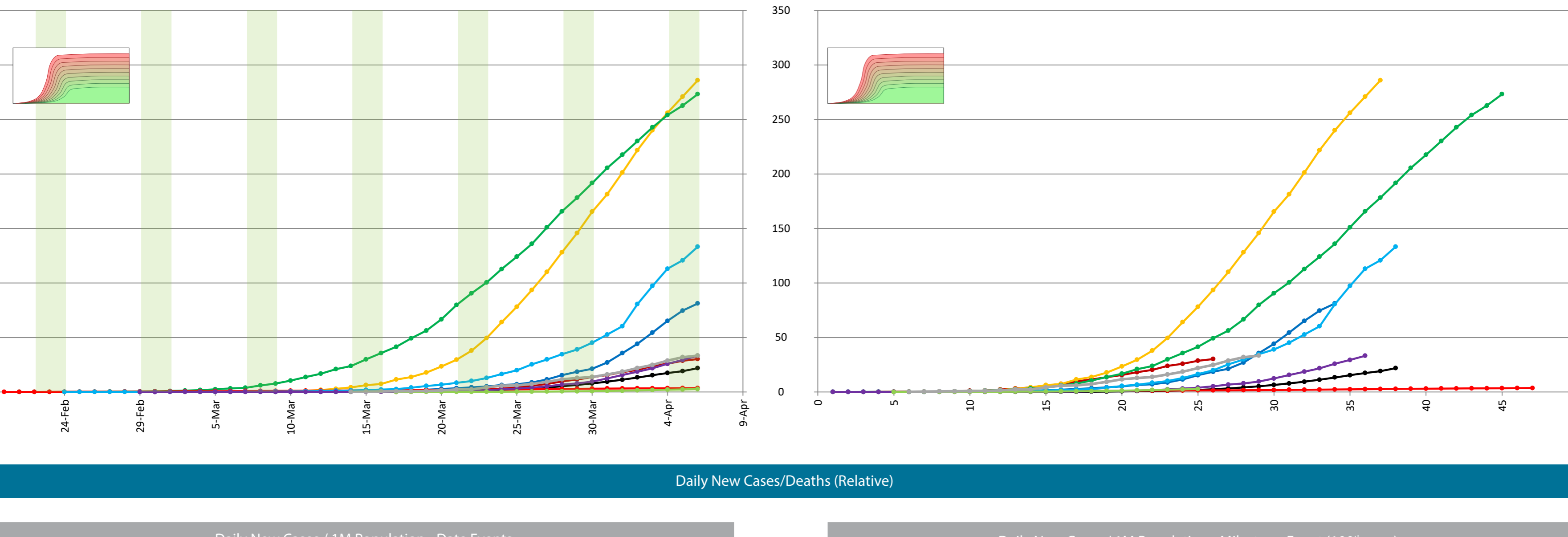
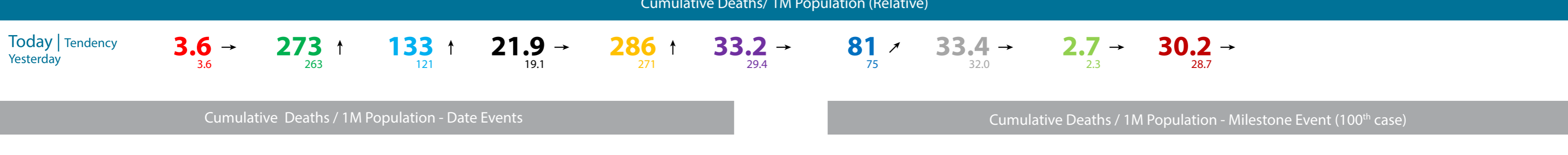
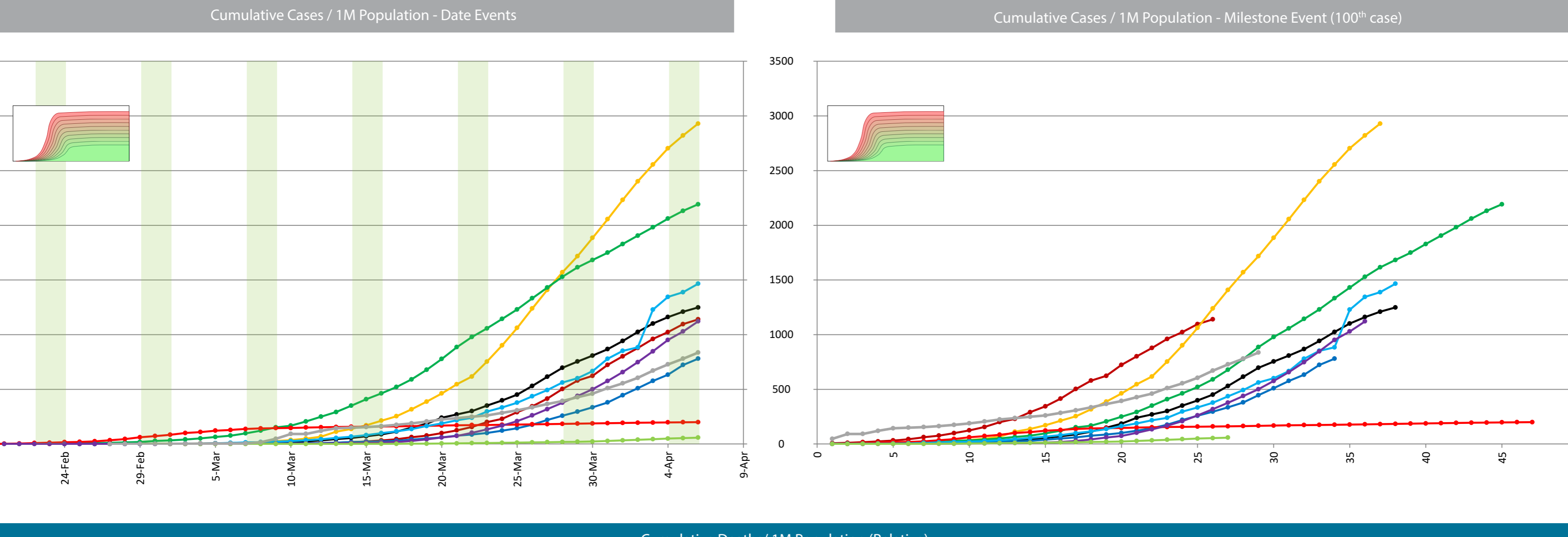
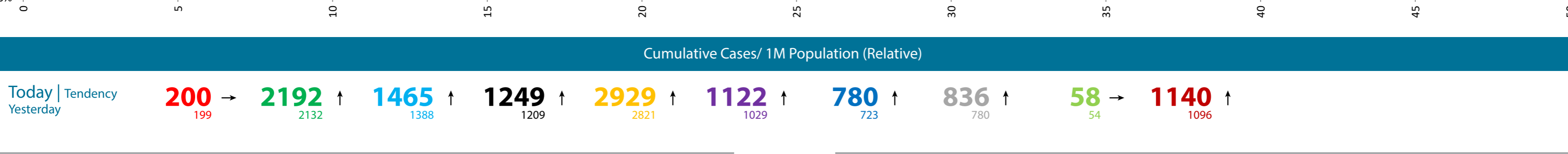
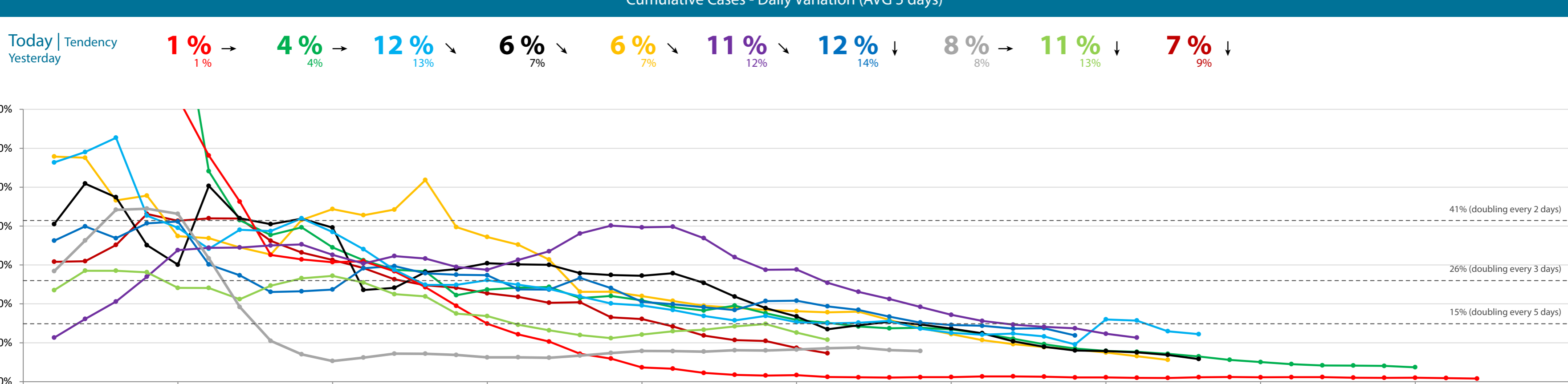
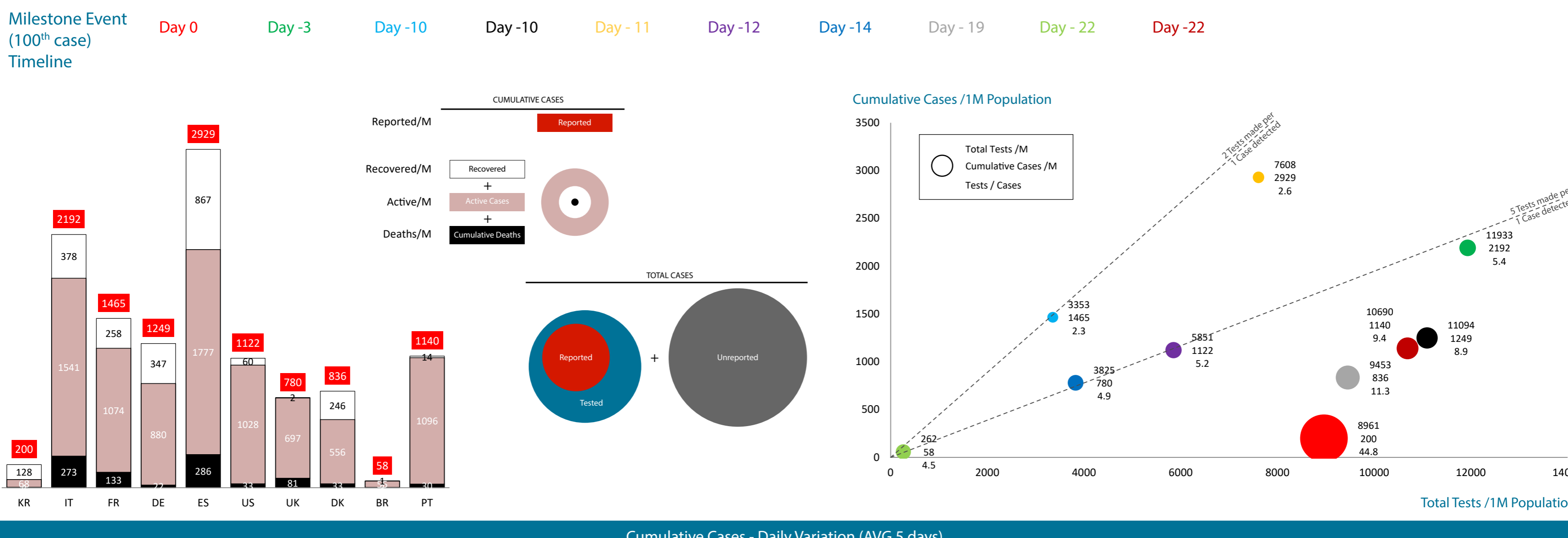
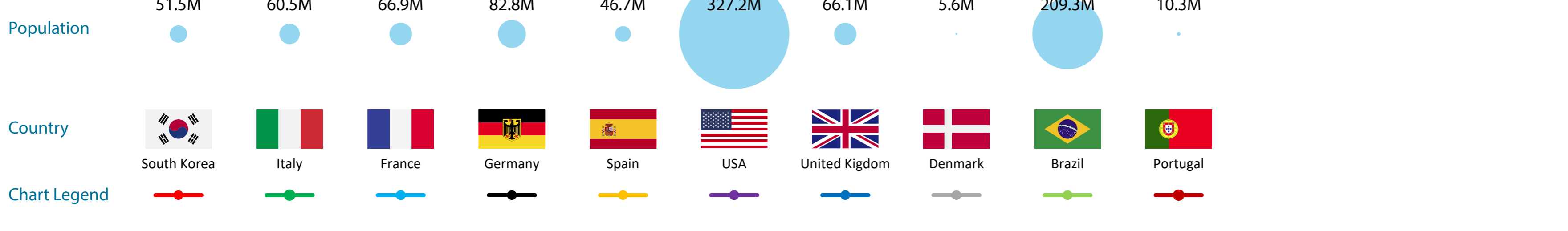


DAILY COVID WATCH

COVID-19 CORONAVIRUS



Austria Chancellor sets out timetable to be the first European country to ease lockdown: 1393 Cases/M, 27 Deaths/M, 911 Active/M

On the Daily New Cases per Cumulative Cases a "break" may have started to Italy, Spain and Germany

Denmark added for European country benchmark, additionally to the current South Korea benchmark

South Korea steady daily variation (1%) - Daily Variation (AVG 5 days) chart - extended period can anticipate a long phase-out for other countries - unless some innovation in medical treatment and/or testing

FRANCE: On April 2 and 3, additional deaths and additional cases from nursing homes that had not been reported previously have been included. The French Government did not include these deaths in their official count, as their country only takes into consideration deaths of hospitalized patients.

BRAZIL: while the number of tests/cases (5) in line with USA and Italy, the number of tests per 1 Million population is much lower than the other WATCH countries -- around ten times less per 1 Million population

With the future uncertainty of reduction of active cases for each country, it is visible that different countries already present different tendencies (Active/cumulative Cases chart) - Spain with more cases (absolut and relative) at this stage can reduce the active cases in a shorter time frame than Germany or UK

A reduction on the WORLD and WATCH daily new cases may be in development, while India and other high population countries don't have presented rapid grow rates.

A second wave may appear from different global strains/mutations and/or in-country non-infected/non-immunized population on lockdowns eased early without herd immunity - new social measures to be developed

"Immunity passports" on evaluation (Germany and other countries) to allow a speed up return to work